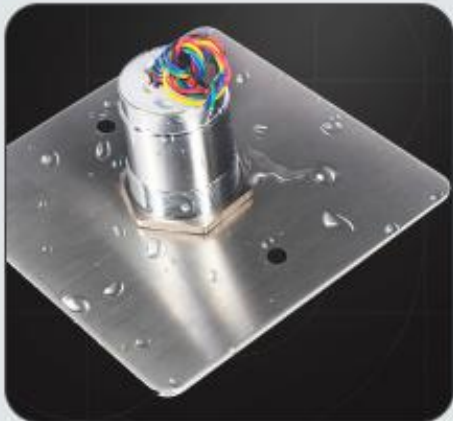




PIXELS CONNECT PTE LTD

Waterproof No Touch Exit Button
PIX-PCXbutton 8

- ❄ Waterproof, IP65
- ❄ 304 Stainless steel
- ❄ 12~24V DC
- ❄ Output contact: NO/NC/COM
- ❄ Sensor Distance: 5~25cm (Adjustable)
- ❄ Blue LED indicator: standby
- ❄ Green LED indicator: active
- ❄ Dimension: 8.6W x 8.6H x 3.6D (cm)



Outdoor, IP65

Blue LED indicator
(Standby)
Green LED indicator
(Working)



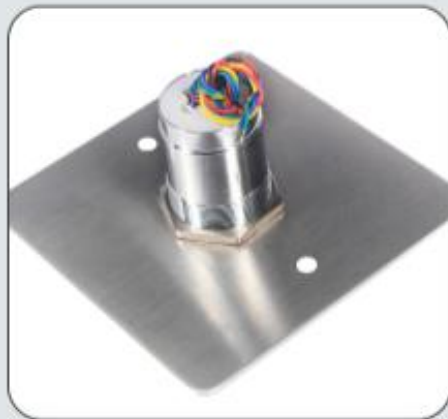
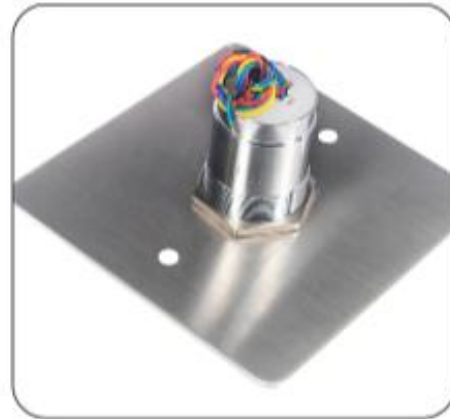


PIXELS CONNECT PTE LTD



Infrared sensing
distance: 5~25cm

Voltage:
12~24V DC

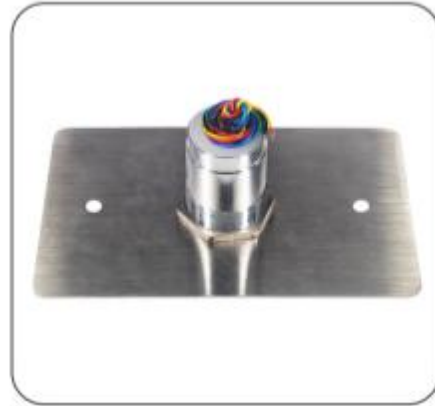


Stainless Steel



PIXELS CONNECT PTE LTD

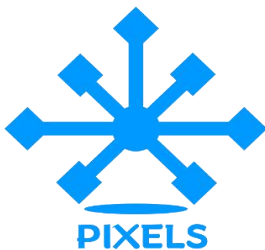
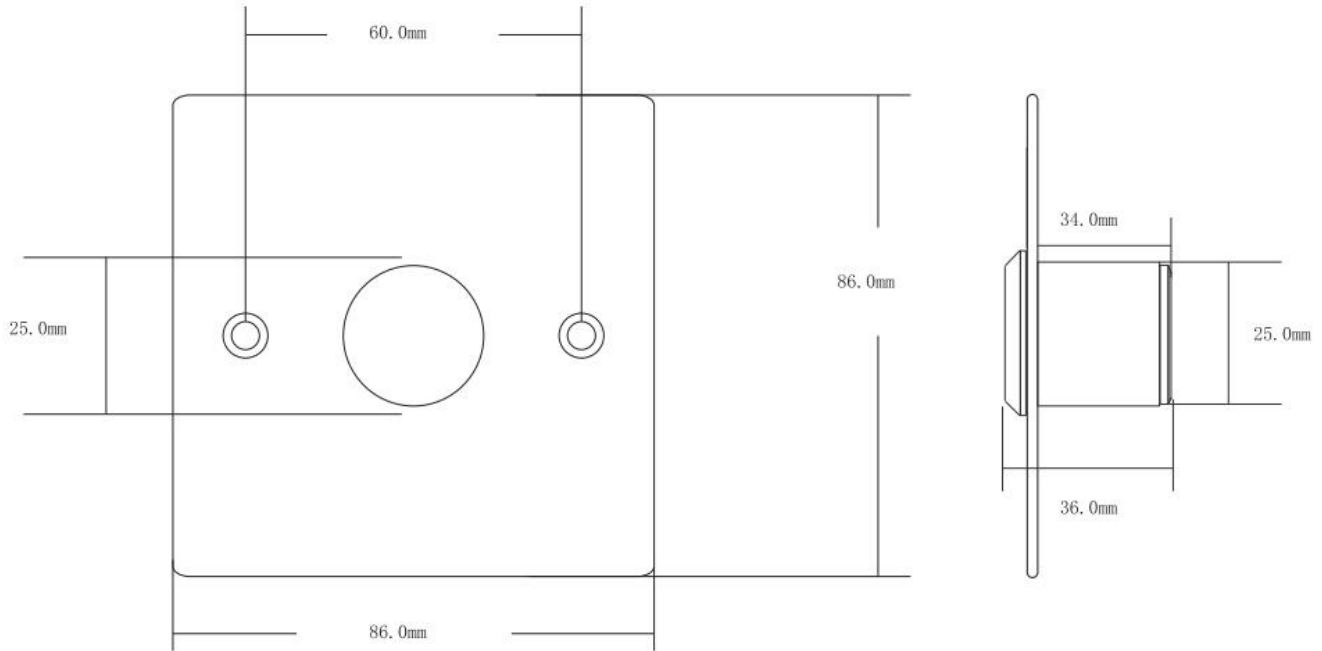
Output Contact :
NO/NC/COM



Product Parameter	Parameter Description
Dimensions	8.6W x 8.6H x 3.6D (cm)
Standard Structure	304 Stainless steel panel, touch button
Current Rating	3A@12~24V DC MAX
Output Contact	NO/NC/COM
Mechanical Life	100000 tested
Sensitive Distance	5-25cm adjustable
Operating Temperature	-20 °C ~ 55 °C (-4 °F ~ 131 °F)
Operating Humidity	0% ~ 95% (relative humidity)
Working Environment	Waterproof, IP65
Panel Material	Stainless steel panel, wire drawing finished
Weight	0.15kg



PIXELS CONNECT PTE LTD



CCTV

Analog Camera, IP Camera
Dome & Bullet Cameras
Hidden Cameras
4K Cameras
PTZ Cameras



**Wireless
Cameras**

Panoramic Camera
4K Action Camera | Car Cameras
Battery Cameras
WiFi Door Bells
Hidden Cameras



**Biometric
Devices**

Fingerprint | Face | Card |
Access PIN Reader
Electromagnetic Lock
Exit Button | Break Glass
Video Door Intercom



PIXELS CONNECT PTE LTD

1013, Geylang East Ave 3, #01-144 Singapore 389728

pixelsconnect@gmail.com | www.pixelsconnect.com.sg | Tel:+65 6440 0023