

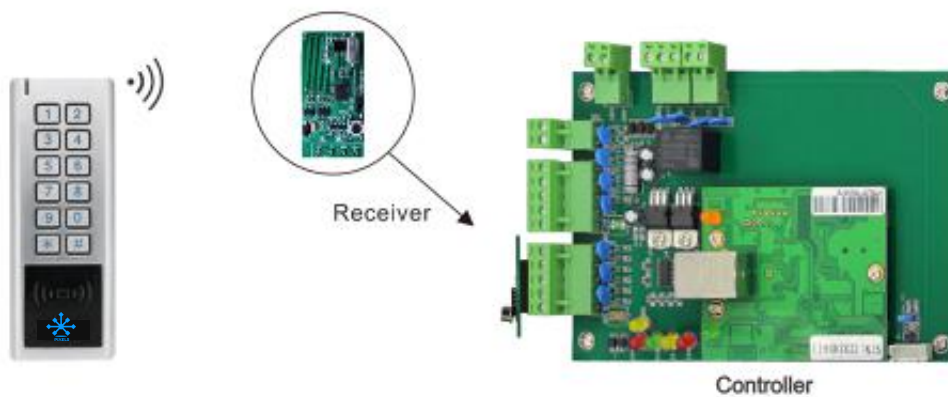


PIXELS CONNECT PTE LTD

IP65 Wireless Keypad Reader (EM) PIX-PCWK2-MF


- ❄ Metal design, anti-vandal
- ❄ Waterproof, conforms to IP65
- ❄ 433MHz Rolling Code technology
- ❄ PIN Length: 1-6 digits
- ❄ Card Type: 13.56MHz Mifare card
- ❄ Programmable Wiegand output of the Receiver: 26 bits or 34 bits
- ❄ Communication distance: 30m maximum
- ❄ Ultra low power consumption

The PIX-PCWK2-MF is a Metal & Waterproof Wireless Keypad & EM Card Reader , including the Wireless Keypad and Receiver, it's 433MHz Rolling code communication between the keypad and receiver, and the receiver can be connected to any 3rd party Wiegand controller.

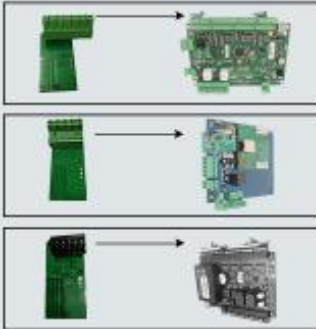




PIXELS CONNECT PTE LTD



Standard terminal connect with all of controller by wires



Special terminals for optional

HIKVISION

WGACCESS

ZKT_{ECO}




Wireless button (Optional accessory)



433MHz
30Meter

Can pair 16pcs max

Battery powered, no need wires any more!





PIXELS CONNECT PTE LTD



Waterproof, IP65



Metal, anti-vandal

Fast installation within 2 minutes





PIXELS CONNECT PTE LTD

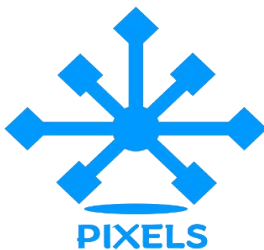
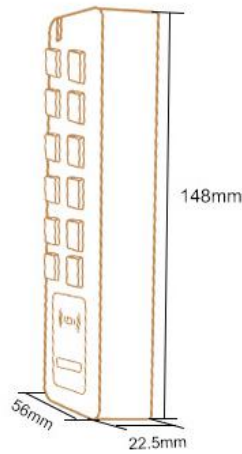
Wireless Keypad Reader	PIN Length	1-6 digits
	Card Type	13.56MHz Mifare card
	Operating Voltage	3 units of AAA batteries
	Idle Current	≤5uA
	Working Current	≤45mA
	Reading Distance	≤3cm
	Communication Frequency	433MHz
	Communication Distance	30m Maximum
	Operating Temperature	-20°C~+60°C (-4°F~+140°F)
	Operating Humidity	0%~86%
	Physical	Zinc-Alloy
	Dimensions	L148 * W56 * H22.5 (mm)
Net Weight	250g	
Receiver	Operating Voltage	12V DC
	Working Current	≤15mA
	Communication Frequency	433MHz
	Wiegand Output Format	26 bits Or 34 bits (Default is 26 bits)
	Operating Temperature	-20°C~+60°C (-4°F~+140°F)
	Operating Humidity	0%~86%



PIXELS CONNECT PTE LTD

	Dimensions	L25 * W50 (mm)
	Net Weight	10g
Wireless Button (Optional Accessory)	Operating Voltage	1unit of 2023 Lithium battery
	Idle Current Working Current	≤2uA ≤20mA
	Communication Frequency	433MHz
	Communication Distance	20m Maximum

Product Size



CCTV

Analog Camera, IP Camera
Dome & Bullet Cameras
Hidden Cameras
4K Cameras
PTZ Cameras



**Wireless
Cameras**

Panoramic Camera
4K Action Camera | Car Cameras
Battery Cameras
WiFi Door Bells
Hidden Cameras



**Biometric
Devices**

Fingerprint | Face | Card |
Access PIN Reader
Electromagnetic Lock
Exit Button | Break-Glass
Video Door Intercom



PIXELS CONNECT PTE LTD

1013, Geylang East Ave 3, #01-144 Singapore 389728

pixelsconnect@gmail.com | www.pixelsconnect.com.sg | Tel:+65 6440 0023