

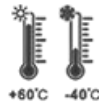


PIXELS CONNECT PTE LTD

## Waterproof Access Control Reader (Mifare)

### PIX-PCSF3-MF

- \* Waterproof, up to IP66
- \* Metal Design & Anti-Vandal
- \* Standalone, one relay
- \* 1,000 fingerprint, 2,000 card users
- \* Card type: 13.56MHz Mifare card
- \* Wiegand 26~44 output
- \* Pulse mode, toggle mode
- \* Multi fingerprints/cards access
- \* Interlock, Support Principal User
- \* Support upload/ download users by APP



APP Transfer User Temperature Range Protection Rating 3,000 Users

PIX-PCSF3-MF is a waterproof metal case standalone fingerprint access control with integrated Mifare reader. It supports transfer users by APP.



Support uploading / downloading users by APP



PIXELS CONNECT PTE LTD

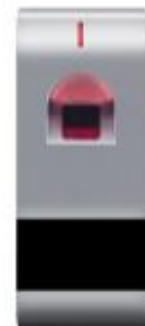
Waterproof, up to IP66



Card type: 13.56MHz Mifare

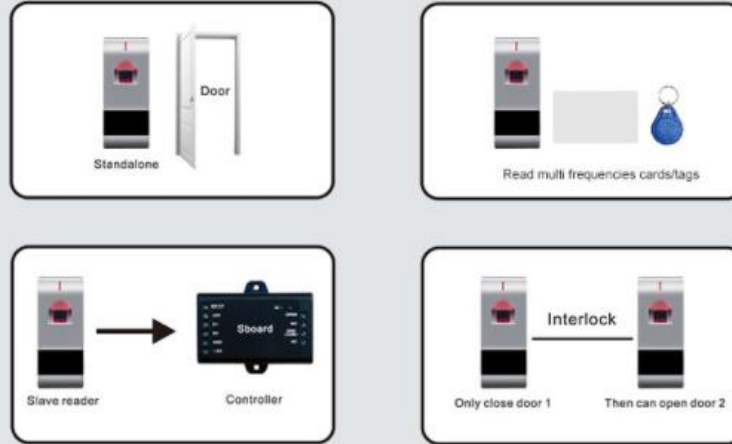
Wiegand 26~44bits (default 26bits)

Data 0  
Data 1





**PIXELS CONNECT PTE LTD**



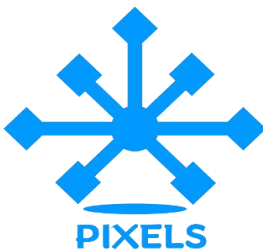
<b>User Capacity</b> Fingerprint Card	<b>3000</b> 1000 2000
<b>Operating Voltage</b> Idle Current	<b>12V DC</b> < 45mA
<b>Proximity Card Reader</b> Radio Technology Read Range	<b>Mifare</b> 13.56MHz Mifare tag / card 1~2 cm
<b>Fingerprint Reader</b> Resolution Identification time FAR FRR	<b>Optical Fingerprint Module</b> 500DPI <1S <0.01% <0.1%
<b>Wiring Connections</b>	Relay output, exit button, alarm, door contact, Wiegand output
<b>Relay</b> Adjustable Relay Output Time Lock Output Load	<b>One (NO, NC, Common)</b> 0~99 Seconds (5 seconds default) 2 Amp Maximum



## PIXELS CONNECT PTE LTD

<b>Wiegand Interface</b>	<b>Wiegand 26~44bits output</b>
<b>Environment</b> Operating Temperature Operating Humidity	<b>Meets IP66</b> -30°C ~ 60°C (-22°F ~ 140°F)--Default -40°C ~ 60°C (-40°F ~ 140°F)--Optional 10%RH ~ 99%RH
<b>Physical</b> Color Dimensions Unit Weight Shipping Weight	Zinc-Alloy Silver L135 x W55 x H26 (mm) 480g 500g

### Product Size



#### CCTV

Analog Camera, IP Camera  
Dome & Bullet Cameras  
Hidden Cameras  
4K Cameras  
PTZ Cameras



#### Wireless Cameras

Panoramic Camera  
4K Action Camera | Car Cameras  
Battery Cameras  
WiFi Door Bells  
Hidden Cameras



#### Biometric Devices

Fingerprint | Face | Card |  
Access PIN Reader  
Electromagnetic Lock  
Exit Button | Break Glass  
Video Door Intercom



## PIXELS CONNECT PTE LTD

1013, Geylang East Ave 3, #01-144 Singapore 389728

pixelsconnect@gmail.com | www.pixelsconnect.com.sg | Tel:+65 6440 0023