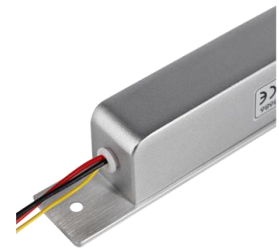




PIXELS CONNECT PTE LTD

Electric Bolt PIX-PCC-Strike 7

- ❄️ Mini Size
- ❄️ Fail safe: Locked when energized
- ❄️ Holding force: 800kg
- ❄️ Low temperature, time delay and signal feedback
- ❄️ Face plate size: 17.0L x 3.0W x 3.4H (cm)
- ❄️ Strike size: 9.0L x 2.5W x 0.2H (cm)
- ❄️ Operating voltage: DC12V

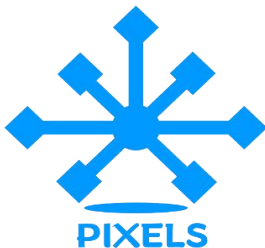


Product Parameter	Parameter Description
Fail Safe	Locked when energized
Face Plate	17.0L x 3.0W x 3.4H (cm)
Strike	9.0L x 2.5W x 0.2H (cm)
Bolt	1.6cm DIA, stainless steel 1.6cm throw
Voltage	12V DC
Start Current	900mA
Standby Current	150mA
Solid Bolt	Polishing housing, 800Kg holding force
Suitable For	Wooden door, glass door, metal door
Signal Output	Door status output, NC/COM
Surface Temp	Low Temperature



PIXELS CONNECT PTE LTD

Induction Distance	8mm
Operating temp	-10 °C ~ 55 °C (14 °F ~ 131 °F)
Operating Humidity	0% ~ 90%(non-condensing)
Special Designed	Tested to 500000 cycles
Face place material	High aluminum, carrulous line finished
Weight	0.5kg



CCTV

Analog Camera, IP Camera
Dome & Bullet Cameras
Hidden Cameras
4K Cameras
PTZ Cameras



Wireless Cameras

Panoramic Camera
4K Action Camera | Car Cameras
Battery Cameras
WiFi Door Bells
Hidden Cameras



Biometric Devices

Fingerprint | Face | Card |
Access PIN Reader
Electromagnetic Lock
Exit Button | Break Glass
Video Door Intercom



PIXELS CONNECT PTE LTD

1013, Geylang East Ave 3, #01-144 Singapore 389728

pixelsconnect@gmail.com | www.pixelsconnect.com.sg | Tel:+65 6440 0023